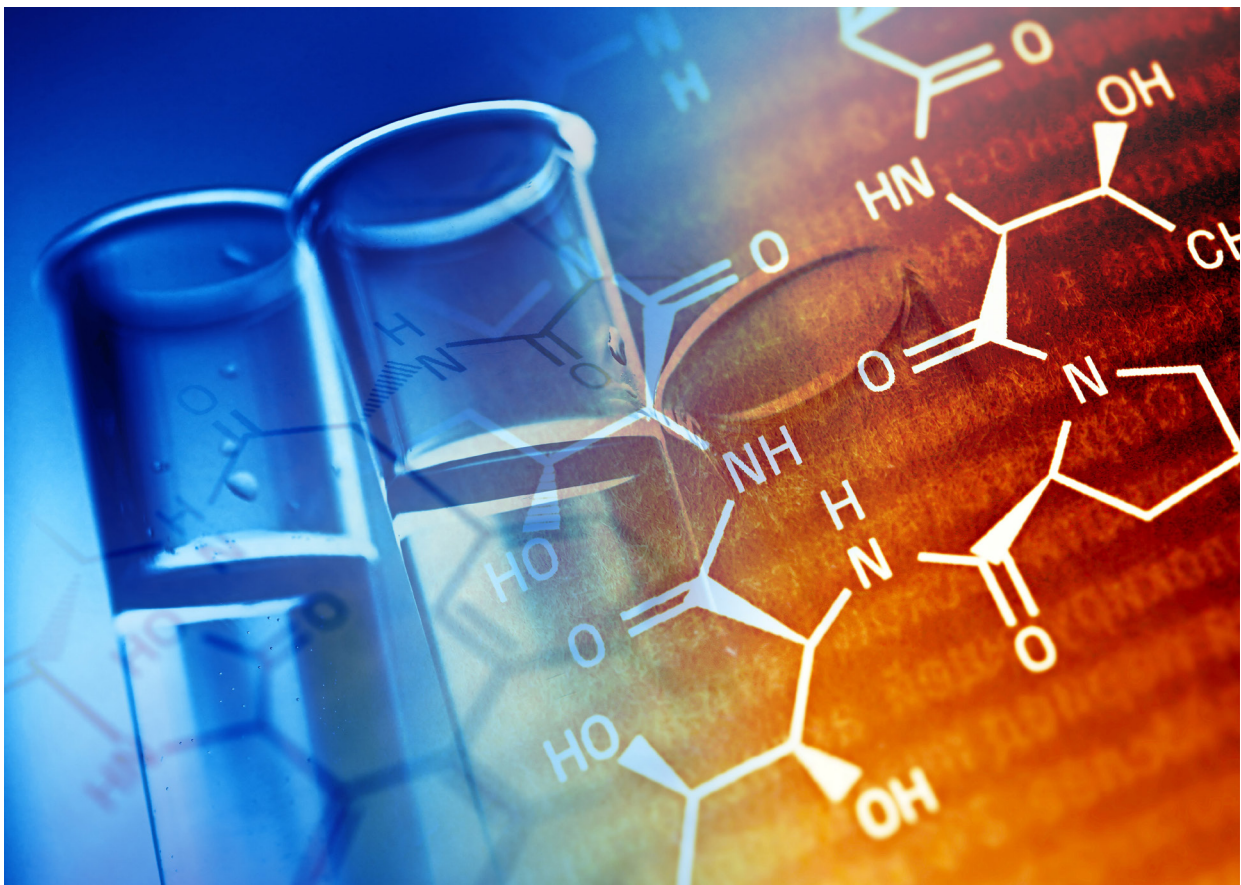


# Water Testing Solutions Ltd

## ECON Test Meters



Water Testing Solutions Ltd  
Unit 11  
Wickham Business Centre  
Harwood Road  
Littlehampton  
BN17 7AU  
United Kingdom  
Tel: +44 (0)1903 714199  
[www.watertestingsolutions.com](http://www.watertestingsolutions.com)



**WATER TESTING**  
**SOLUTIONS**

## ECON Conductivity / TDS Meters Test Meters

### WTS-B100774 ECON 7021 Pocket Conductivity/TDS/Temp/Salinity Meter

#### Specifications:

|              |                               |
|--------------|-------------------------------|
| Conductivity | 0-1999 $\mu$ S & 0.01-19.99mS |
| TDS          | 0-999ppm & 1.0-9.99ppt        |
| Temperature  | 0-90 °C                       |
| Salinity     | 0-999ppm & 1.0-9.99ppt        |

#### Features:

IP67 Rated  
Large LCD Display  
ATC  
Auto Power Off  
Hold Function & Replacement Sensor (if required)

#### Accessories

WTS-B100775 ECON 7021 CON/TDS Sensor



### WTS-B100776 ECON Expert CTS Meter

#### Specifications:

|              |                 |
|--------------|-----------------|
| Conductivity | 0.00 - 20.00mS  |
| TDS          | 0.00 - 20.00ppt |
| Temperature  | 0-50 °C         |
| Salinity     | 0.0 - 10.0ppt   |

#### Features:

IP67 Rated  
ATC  
Auto Power Off



WTS-B100777 ECON 5031 Pocket TDS Meter

Specifications:

TDS 10 - 9990ppm

Features:

Splashproof

Extendable Probe

ATC

Manual Calibration



## ECON ORP / Redox Test Meters

### WTS-B100791 ORP Test 10 Tester

#### Specifications:

pH -999 - +1000 mV -10 - 200 °C 0.1 / 1 °C increment  
Calibration Points 1 (± 150 mV offset)

#### Features:

Large Dual Custom Display  
Self-Diagnostic  
Hold Function  
Auto Power Off

#### Accessories



## ECON pH Test Meters

### WTS-B100781 ECON 7011 Pocket pH Meter Redox (additional probe required)

#### Specifications:

pH -2 - 16 pH  
mV -1000 - 1000  
Temperature 0 - 90 °C  
Calibration Points 3 Point Push Button

#### Features:

IP67 Rated  
Large LCD Display  
ATC  
Auto Power Off  
Hold Function  
Replacement Sensor (if required)

#### Accessories

WTS-B100782 ECON 7011 pH Sensor  
WTS-B100783 ECON 7011 Redox Sensor



### WTS-B100784 ECON Expert pH Meter

#### Specifications:

pH 0 - 14 pH  
Temperature 0 - 50 °C  
Calibration Points Up to 3 Points, Calibration Sold Separately

#### Features:

IP67 Rated  
ATC  
Auto Power Off



### WTS-B100785 ECON pH 5011 Pocket pH Meter

#### Specifications:

pH 0 - 14 pH  
Calibration Points Single Point (pH7)

#### Features:

Splashproof  
Extendable Probe  
Manual Calibration



## ECON Multi Parameter Test Meters

### WTS-B100766 8200 Multi-Function Meter

#### Specifications:

|              |   |
|--------------|---|
| pH           | -2.00 - 16.00 pH  |
| ORP          | -1999 - -200 mV<br>-199.9 - 499.9 mV<br>500 - 2000 mV                               |
| Conductivity | 0.0- 199.9 $\mu$ S<br>200 - 1999 $\mu$ S<br>2.00 - 19.99 mS<br>20.0 - 100.0 mS@25°C |
| TDS          | 0.0 - 131.9 ppm<br>132 - 1319 ppm<br>1.32 - 13.19 ppt<br>13.2 - 66.7 ppt            |
| Salinity     | 0.0 - 99.9 ppm<br>100 - 999 ppm<br>1.0 - 9.99 ppt<br>10.0 - 50.0 ppt                |
| Temperature  | 0-110 °C  |

#### Features:

IP57 rated  
ATC  
Auto power off

#### Accessories

WTS-B100767 8200 ORP Electrode  
WTS-B100768 8200 Replacement 3 in 1 Electrode



### WTS-B101474 ECON 6742 Chlorine Free and Total Meter

#### Specifications:

|            |   |
|------------|---|
| Range      | 0 ~ 3.50 ppm  |
| Resolution | 0.01 ppm  |
| Accuracy   | $\pm$ 0.05 + 1 digit at <2.00 ppm<br>$\pm$ 5% FS + 1 digit at >2.00 ppm |
| Response   | <5 seconds  |
| Operating  | 0 ~ 50 °C, <85% RH  |
| Sample     | 5 ml  |
| Power      | DC 1.5V (UM4, AAA) battery x 4  |
| Dimension  | Meter: 42 x 33 x 183 mm   |
| Weight     | Meter: 168 g(including battery)   |

#### Features:

ATC  
Auto power off

